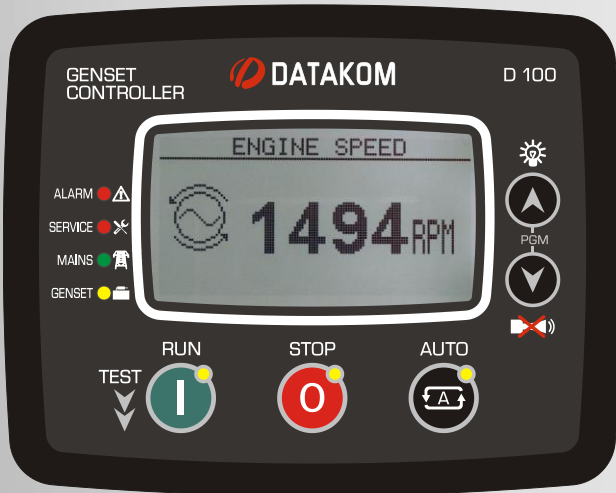


COST EFFECTIVE MODERN TECHNOLOGY



WEB BASED D-100-MK2

The D-100 is the lowest cost genset controller ready for internet monitoring through plug-in modules.

FEATURES

- Diesel and gas genset support
- 400 event logs, full snapshot
- All parameters front panel editable
- 3 level configuration password
- 128x64 graphical LCD display
- 4 configurable digital inputs
- 5 configurable digital outputs
- 3 configurable analog inputs
- CANBUS-J1939
- 3 configurable service alarms
- Dual mutual standby with equal aging of gensets
- Manual "speed fine adjust" on selected ECUs
- Automatic fuel pump control
- Disable protections feature
- Excess power protection
- Reverse power protection
- Overload IDMT protection
- Load shedding, dummy load
- Multiple load management
- Current unbalance protection
- Voltage unbalance protection
- Fuel filling & fuel theft alarms
- Idle speed control
- Battery charge run enabled
- Combat mode support
- Multiple nominal conditions
- Contactor & MCB drive
- 4 quadrant genset power counters
- Mains power counters
- Fuel consumption counter
- Modem diagnostics display
- Configurable from USB & GPRS
- Free configuration program
- Allows SMS controls
- Ready for central monitoring
- Mobile genset support
- Automatic GSM geo-location
- Easy USB firmware upgrade
- IP65 rating with optional gasket

MEASUREMENTS

- Mains & genset PN/PP voltages
- Mains & genset frequency
- Mains & genset phase currents
- Mains & genset neutral currents
- Mains & genset, phase & total, kW, kVA, kVAr, pf
- Engine speed
- Battery voltage

PLUG-IN MODULES

- GSM Modem (2G-3G-4G)
- Ethernet 10/100Mbps
- Wi-Fi
- RS-485 (2400-38400baud)
- RS-232 (2400-38400baud)

FUNCTIONALITIES

- AMF unit
- ATS unit
- Remote start controller
- Manual start controller
- Engine controller

TOPOLOGIES

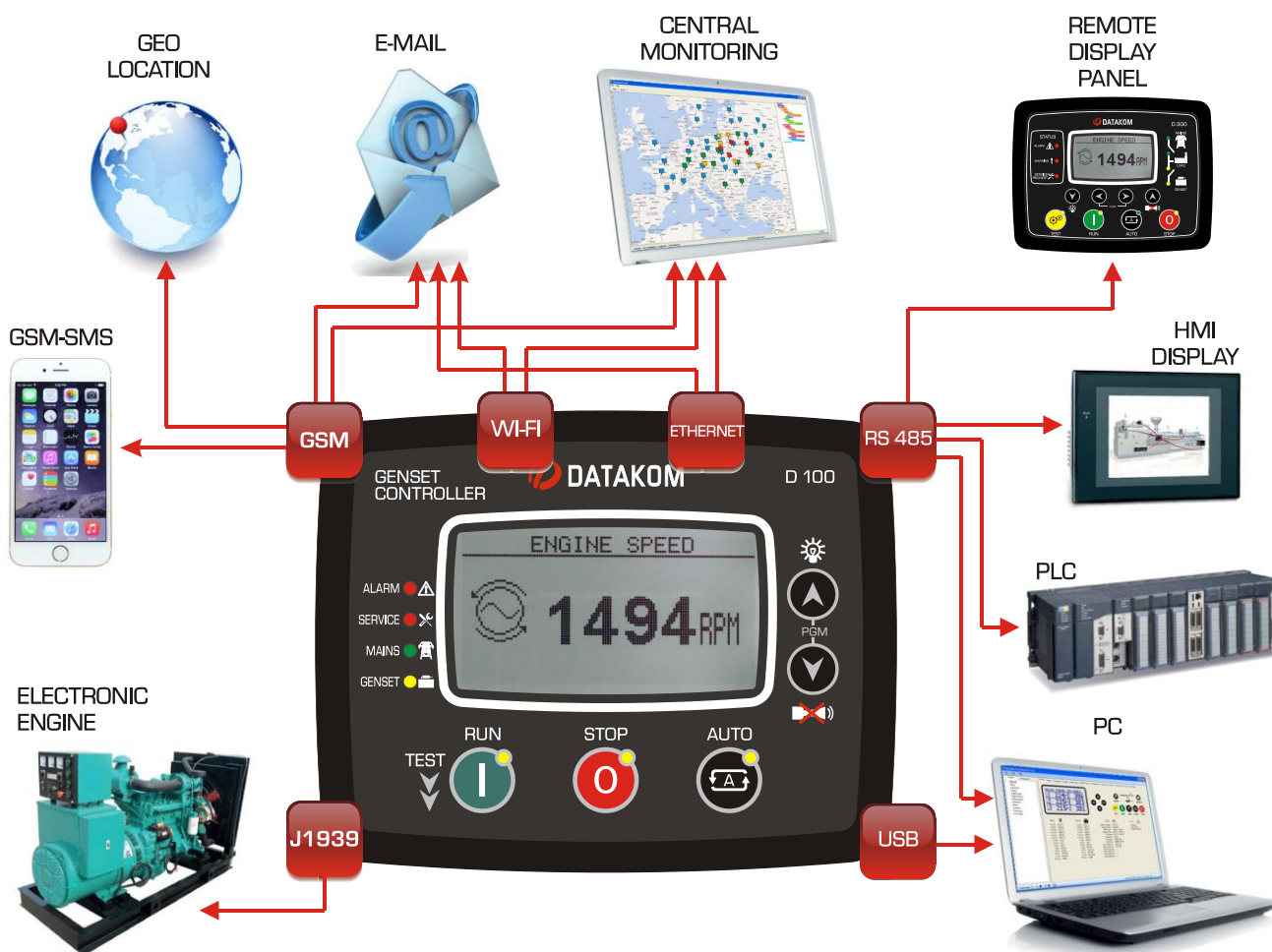
- 3 ph 4 w, star & delta
- 3 ph 3 w, 2 CTs
- 2 ph 3 w
- 1 phase 2 wires

COMMUNICATION

- USB Device
- J1939-CANBUS (optional)
- Geo-locating through GSM
- Internet Central Monitoring
- SMS message sending
- Free PC software: Rainbow Plus
- Modbus RTU



COMMUNICATIONS



TECHNICAL SPECIFICATIONS

Alternator voltage: 0 to 300 V-AC (Ph-N)
Alternator frequency: 0-100 Hz.
Mains voltage: 0 to 300 V-AC (Ph-N)
Mains frequency: 0-100 Hz.
Topology: 1-2-3 phases, with or without neutral
DC Supply Range: 8.0 to 36.0 V-DC.
V-A-cos Accuracy: 0.5% + 1 digit
kW-kVA-kVAr Accuracy: 1.0% + 1 digit
Current consumption: 300 mA-DC max @ 12V-DC
Current Inputs: from current transformers. .../5A.
Digital inputs: input voltage 0 to 36 V-DC.
Analog input range: 0-5000 ohms.
Outputs: Protected mosfet semiconductor outputs, rated 1Amp@28V-DC
Cranking dropouts: survives 0V for 100ms.
Charge Alternator Excitation: 2W.
Display Screen: 2.9", 128x64 pixels
USB Device: USB 2.0 Full speed

Operating temperature: -20°C to 70°C (-4 to +158 °F)
Storage temperature: -40°C to 80°C (-40 to +176°F)
Maximum humidity: 95% non-condensing.
IP Protection: IP65 from front panel, IP30 from the rear (with gasket)
Dimensions: 133 x 107 x 46mm (WxHxD)
Panel Cut-out Dimensions: 117 x 87 mm minimum.
Weight: 250 g (approx.)
Case Material: High Temperature, non-flammable ABS/PC
Installation: Flat surface mounting on a Type 1 enclosure. Rear retaining plastic brackets.

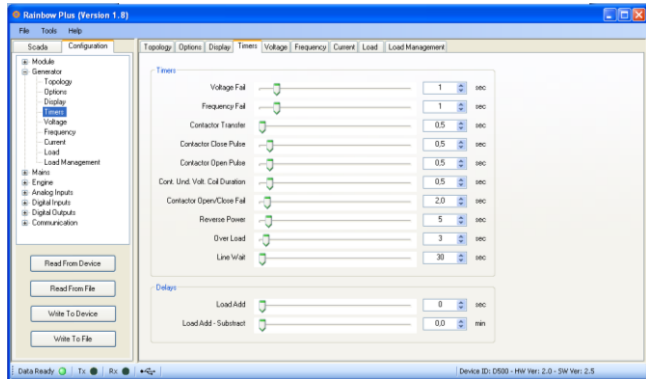
CONFORMITY

EU Directives Conformity
 -2014/35/EC (low voltage)
 -2014/30/EC (electro-magnetic compatibility)
Norms of reference:
 EN 61010 (safety requirements)
 EN 61326 (EMC requirements)

RAINBOW PLUS PROGRAM

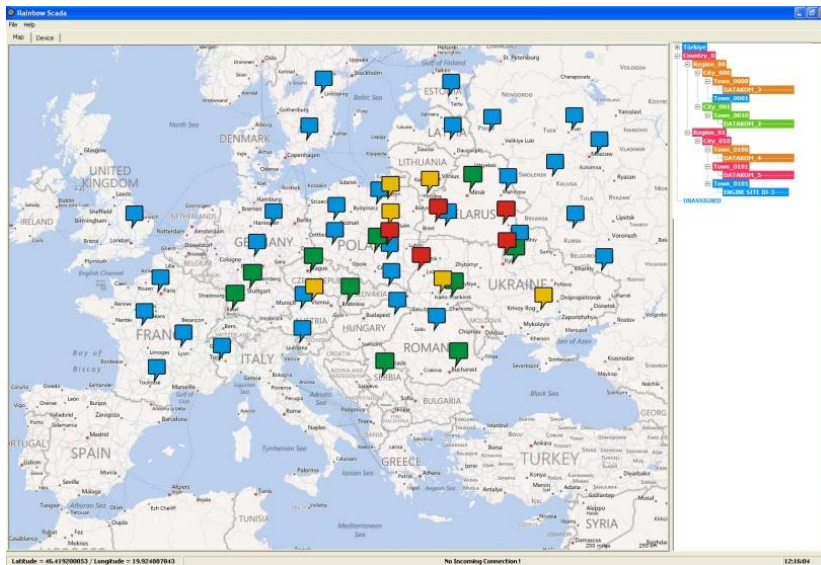


Scada



Parameter Adjustment

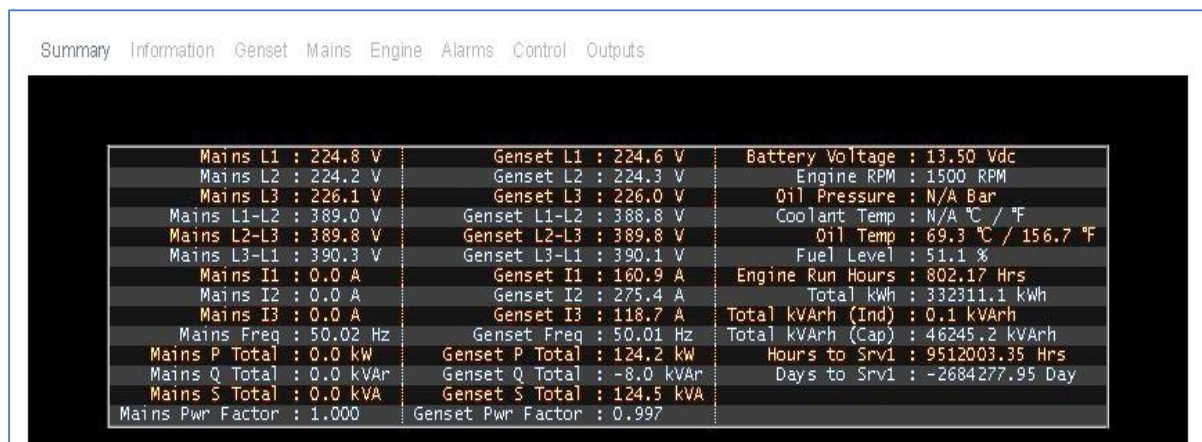
RAINBOW SCADA CENTRAL MONITORING



Fleet Display on Map, online monitoring



Smartphone Support



Real time monitoring

TYPICAL CONNECTIONS

